

## **Historic, Archive Document**

Do not assume content reflects current scientific knowledge, policies, or practices.



62.71

# GILL BROS. SEED CO.



## 1911

ANNUAL CATALOG

---

---

OREGON GROWN SEEDS  
OUR SPECIALTY



### LARGEST DAHLIA LIST IN THE NORTHWEST



RAYMOND W. GILL

EDWARD E. GILL

## FOREWORD

---

Cleone, Oregon, January, 1911.

DEAR FRIENDS AND READERS:—

In this our first Catalogue we offer you a fairly complete list of those vegetables which our long experience in market gardening have proven the very best for this locality. It shall not be our object to give a long list of varieties, cataloging only the best.

A great many of the seeds offered we grew last summer at our farm near Portland, while others have been secured from such leading seed merchants as by long trial we have found reliable. We shall strive year after year to grow more of our own seed as we believe that seed grown here when possible will produce much better results than that from other sections.

We offer good seed of those varieties of flowers which are the most popular at this time. We call your attention to our stock of dahlias, of which we make a specialty. We list 150 kinds, the largest list of varieties offered in the Northwest. Our aim is not and never will be to offer the cheapest, but the best of high-grade stock at as reasonable a price as possible.

GILL BROS. SEED CO.

---

## ABOUT ORDERING

---

**ORDER EARLY**, as some stocks are limited and may run out.

**REMITTANCE MUST ACCOMPANY ORDER** by money order or stamps. Checks on any bank in Multnomah County, Oregon City or Vancouver, Wash., will be accepted.

Prices in this Catalogue by **EXPRESS OR FREIGHT** do not cover shipping expenses. E. or F. indicates express or freight.

All prices up to and including one pound include shipping expense, and for more only where indicated.

Be sure to give shipping instructions, also **WRITE YOUR NAME AND ADDRESS PLAINLY**.

---

**VISITORS** are always welcome at our farm. Those who are interested in Dahlias and Roses will find a grand display of them growing at our farm next summer. We will bloom over three hundred varieties of Dahlias and many other flowers and vegetables.

To get to farm take Montavilla car from Portland to East 80th street, then go one mile east and a quarter mile north.

# Collections

## No. 1

Ten 10c Packets for 60 cents of the following new and standard varieties, by mail postpaid.

- 1 Bean, Burpee's White Wax.
- 1 Bean, Kentucky Wonder Wax.
- 1 Cabbage, Glory of Enkhuisen.
- 1 Corn, Gill's Portland Market.
- 1 Pea, Thomas Laxton.
- 1 Pepper, Crimson Giant.
- 1 Squash, Delicious.
- 1 Pumpkin, Winter Luxury.
- 1 Parsnip, Gill's Tender Heart.
- 1 Tomato, Gill's Select Earliana.

## No. 2

Ten 5c Packets for 30 cents of the following choice vegetables.

- 1 Beets, Early Model.
- 1 Carrot, Chantenay.
- 1 Cabbage, All Head Early.
- 1 Cucumber, Emerald.
- 1 Musk Melon, Emerald Gem.
- 1 Water Melon, Hungarian Honey.
- 1 Lettuce, Tomhannock.
- 1 Parsley, Dark Moss Curled.
- 1 Radish, White Pearl.
- 1 Vegetable Orange.

## No. 3

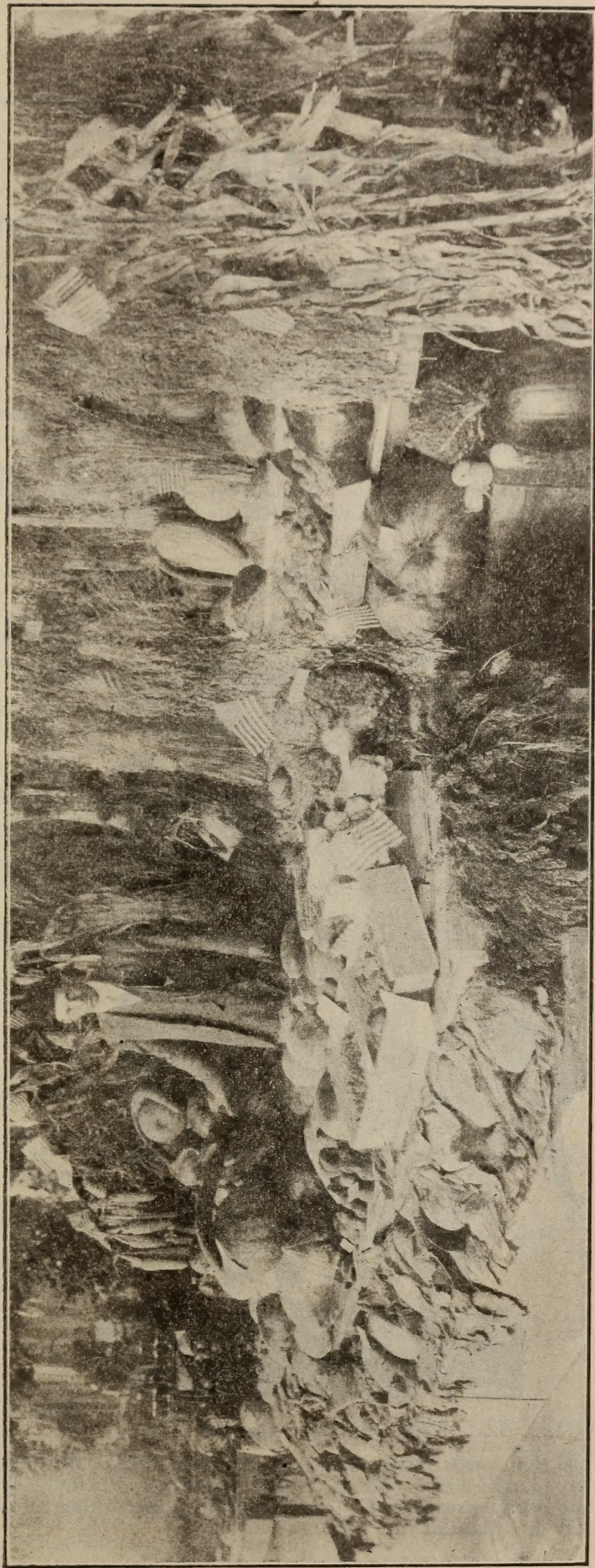
Five Packets for 15 cents of the following beautiful flowers.

- 1 Sweet Peas, Gill's Rainbow Mixture.
- 1 Poppy, Mixed Shirley.
- 1 Nasturtium, Surprise Tall Mixed.
- 1 Aster, Gill's Fancy Mixed.
- 1 Snapdragon, Gill's Superior Mixed.

## No. 9

Novelty Collection. One Packet each of the following, worth 50 cents, for 25 cents postpaid.

- 1 Pea, Gill's "String Bean" Pea, 10c.
- 1 Salsify, Mammoth Sandwich Island, 5c.
- 1 Cucumber, Snake, 10c.
- 1 Musk Melon, Banana, 5c.
- 1 Chicory, Large Rooted, 5c.
- 1 Kohl Rabi, Large White Vienna, 5c.
- 1 Tomato, Yellow Pear, 5c.
- 1 Millet, Broom Corn, 5c.



Display of Gill Bros.' Products at the Gresham Fair



# Vegetables



## ASPARAGUS

Plant roots in fall or spring, in rows 3 ft. wide and 1 ft. in rows.

**Barr's Mammoth**—Very large stalks doz., \$1 per 100, postpaid. E. or F. with close round heads. Purple-tinted 100 for 65c, 500, \$2.50. stalks.—Pkt. 5c, oz. 15c,  $\frac{1}{4}$ lb. 30c.

**Conover's Colossal**—The standard variety. Pkt. 5c, oz. 15c,  $\frac{1}{4}$  lb. 25c.

**Columbian Mammoth White**—This large-stalked strain produces white stalks above the surface. Pkt. 5c, oz. 15c,  $\frac{1}{4}$  lb. 30c; 1 year roots 15c

**Palmetto**—Large, thick, green shoots. Roots only. 1 year, 15c a doz.; 100 for \$1. E. or F. 100 for 65c; 500 for \$2.50.

## BEANS



Burpee's Stringless Green Pod

Plant in April for early beans, as soon as the ground becomes warm, in light, loamy soil. Large-seeded beans require warmer weather than small. Cover from one and a half to two and a half inches deep, according to the weather. Pole beans should be planted in hills.



**Burpee's Stringless Green Pod.** We consider this the best early bush bean we have ever tried. The pods are green, of good length, entirely stringless, tender and brittle and remain so until nearly ripe. This brown-seeded bean is both early and hardy and one of the richest flavored beans of all. It is well adapted to our climate and is a splendid market or garden bean. Per large packet, 10c; lb., postpaid, 30c; E. or F. 20c per lb.

**Burpee's White Wax.** This new bean is one of the finest appearing beans grown for market purposes. Its habit of growth is very upright and sturdy. The broad long pods are of a waxy lemon color and very free from rust. They will stand very early planting. The seed is pure white, making a fine shell-bean when ripe. Pkt. 10c, lb. 25c, E. or F. 15c per lb.

**Burpee's New Kidney Wax.** This grand new bean is sure to be a leader among the wax beans and is superior to Ward-ll's Kidney Wax. The pods are six to eight inches long, solid, tender and brittle, and of a lemon-yellow color. Remarkably free from disease. White-seeded with brown eye. Fine for garden or market. Pkt. 10c, lb. 30c postpaid, E. or F. 20c per lb.

**Dwarf Horticultural or Cranberry.** A rich-flavored, early bush bean, suitable both for snap or shell bean. Early and prolific. Seed and pod striped and blotched with red on white. The cranberry type are very rich in flavor and should be more widely planted. Large pkt 10c, lb. 25c postpaid, E. or F. 15c per lb.

**Horticultural Pole.** Similar to Dwarf Horticultural except these are pole beans. A heavy yielder of large, broad and brittle pods. Splendid for snap or shell beans. Large pkt. 10c, lb. 25c, E. or F. 15c per lb.

**Burger's Stringless Green Pod Pole, or White-Seeded Kentucky Wonder.** A very prolific green-podded bean of superior quality. Extra long pods of dark-green color. The seed being white makes them fine for winter cooking. Stringless when young. Pkt. 10c, lb. 30c postpaid, E. or F. 20c per lb.

**Giant Stringless Green-Pod Valentine.** A splendid green-podded bush bean, to follow stringless green pod. Pods slightly curved, brittle and stringless at all stages. Pkt. 10c, lb. postpaid 25c.

**Kentucky Wonder Wax.** Those familiar with the old Kentucky Wonder will welcome this wax bean of the same family. For a pole bean it ripens early and is a rampant grower and heavy yielder. The pods are very large, broad and long and cook tender. A good bean for market or garden. Pkt. 10c, lb. 40c postpaid, E. or F. 30c per lb.

**Kentucky Wonder.** This is the old standby and is no doubt the heaviest yielder of all beans. Often sold as Asparagus bean. A string bean with long, green pods and light brown seeds. It cooks tender and is a good all-round bean. Large pkt. 10c, lb. 25c postpaid, E. or F. 15c per lb.

## BEETS

Plant in rows 3 ft. wide, with drill, April 1st to June 1st. Thin to 3 or 4 inches apart.

**Early Model.** We consider this, after several trials, to be the best all-round table beet for this section. Its extreme earliness, perfect uniform shape, and rich coloring throughout, make it the best market and garden beet. Entirely free from strings or core. Pkt.

10c, oz. 15c,  $\frac{1}{4}$ lb. 45c, \$1.00 per lb. postpaid.

**Eclipse.** Early, of globe shape, fine quality and rich, dark crimson color. Pkt. 5c, oz. 15c,  $\frac{1}{4}$ lb. 20c, lb. 65c postpaid.

## MANGEL BEETS

**Golden Tankard.** A smooth, yellow-fleshed mangel of large size, growing largely above ground, making it easy to harvest. A good yielder. Pkt. 5c, oz. 10c,  $\frac{1}{4}$ lb. 20c, lb. 35c postpaid, E. or F. 25c per lb.

**Mammoth Prize Long Red.** The standard red sort, with long roots often growing two feet long. Pkt. 5c, oz. 10c,  $\frac{1}{4}$ lb. 20c, lb. 35c postpaid.

# CABBAGE

Early varieties should be started in a coldframe in February, or planted the fall previous. Some prefer to set them out in the fall. Late crop, plant in bed May 1st, transplant June 20 to July 20, from 3 to 3½ feet each way, according to size of variety.



**Early Jersey Wakefield.** The standard early cabbage and the best, first-early oblong headed cabbage. Pkt. 5c, oz. 35c, ¼ lb. \$1 postpaid.

**Large Wakefield, or Chariston.** Similar to Jersey Wakefield but half again as large and ten days later. Pkt. 5c, oz. 35c, ¼ lb. \$1 postpaid.

**Early Winningstadt.** Later than Jersey Wakefield, fine for summer and winter and the sweetest cabbage in existence. Pkt. 5c, oz. 35c, ¼ lb. \$1 postpaid.

## Later Sorts

**Glory of Enkhuisen.** The best summer and early fall cabbage. We have had years of experience with cabbage and we recommend this for hardness, sweetness, tenderness, to a greater extent than any of them. This cabbage is bound to become a standard sort both for market and garden. It is a second early and good sure header. Pkt. 10c, oz. 35c, ¼ lb. \$1, lb. \$3.75 postpaid.

**All Head Early.** A second early cabbage that is largely taking the place of the Flat Dutch, which is now considered among most growers as a back number. It is a sure header, flat in shape with light-green foliage. It is

coming to the front as a kraut cabbage and for that purpose we highly recommend it, as the leaves are of fine texture and make fine kraut. It does not burst as easy as most cabbage from the rains. Pkt. 5c, oz. 30c, ¼ lb. 90c, lb. \$3.50.

**Danish Ball Head, or Hollander.** The best main crop cabbage. Hard as a rock and holds its color after cutting better than any cabbage. We have seen it lay for three weeks without turning yellow. This makes it a fine shipper and a fine retail cabbage. The market requires a small, hard-headed cabbage to bring the best sale and this variety meets this demand. It will mature heads in soil where other varieties fail. A cabbage sure to head if given half a show. Our strains are from selected heads. Pkt. 5c, oz. 40c, ¼ lb. \$1.25 postpaid.

**Mammoth Rock Red.** The best red cabbage, hard heading and large. Fine for cold slaws. Pkt. 5c, oz. 35c.

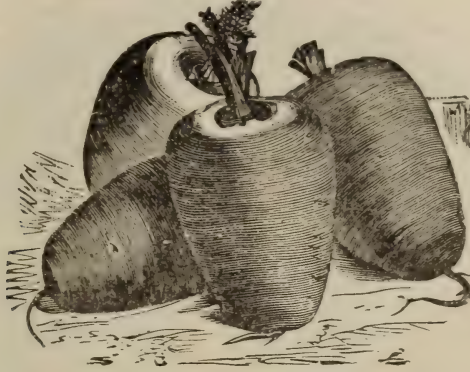
**Perfection Drumhead Savoy.** Curly, crinkled leaves, sweet and of fine texture. Pkt. 5c, oz. 35c.

## BRUSSELS SPROUTS

**Matchless.** A new variety of good quality. Grow some sprouts, they are fine towards spring. Pkt. 10c, oz. 25c, postpaid.

## CARROTS

Plant from April 1st to June 1st in rows 3 feet wide with drill. When they come through the ground run a white line of plaster along the row and then cultivate with harrow tooth. This also works fine with beets and parsnips.



**Early Model, or Chantenay.** We consider this the best of the table carrots. The roots are very smooth, stump-rooted and thick at the tops. The tenderest and sweetest carrot we ever grew. It will grow closer together in the rows and still mature good-sized carrots than any other. In fact, it is such a good yielder that many plant it for feeding purposes. It does not crack like some varieties. Pkt. 5c, oz. 10c,  $\frac{1}{4}$  lb. 35c, lb. \$1.

**Danver's Half Long.** The standard stock carrot, but we do not recommend it for table use as compared to the Chantenay. It is a heavy yielder and is largely planted. Pkt. 5c, oz. 10c,  $\frac{1}{4}$  lb. 35c, lb. \$1 postpaid.

**Large White Belgian.** Long-rooted white stock carrot, very heavy yielder. Pkt. 5c, oz. 10c,  $\frac{1}{4}$  lb. 25c, lb. 75c postpaid.

## CELERY

**Golden Self-Blanching.** The standard of the golden celeries and very popular everywhere. It is dwarf, compact in habit with thick solid stalks which blanch a pretty waxen yellow. Pkt. 10c,  $\frac{1}{2}$  oz. 30c, oz. 50c.

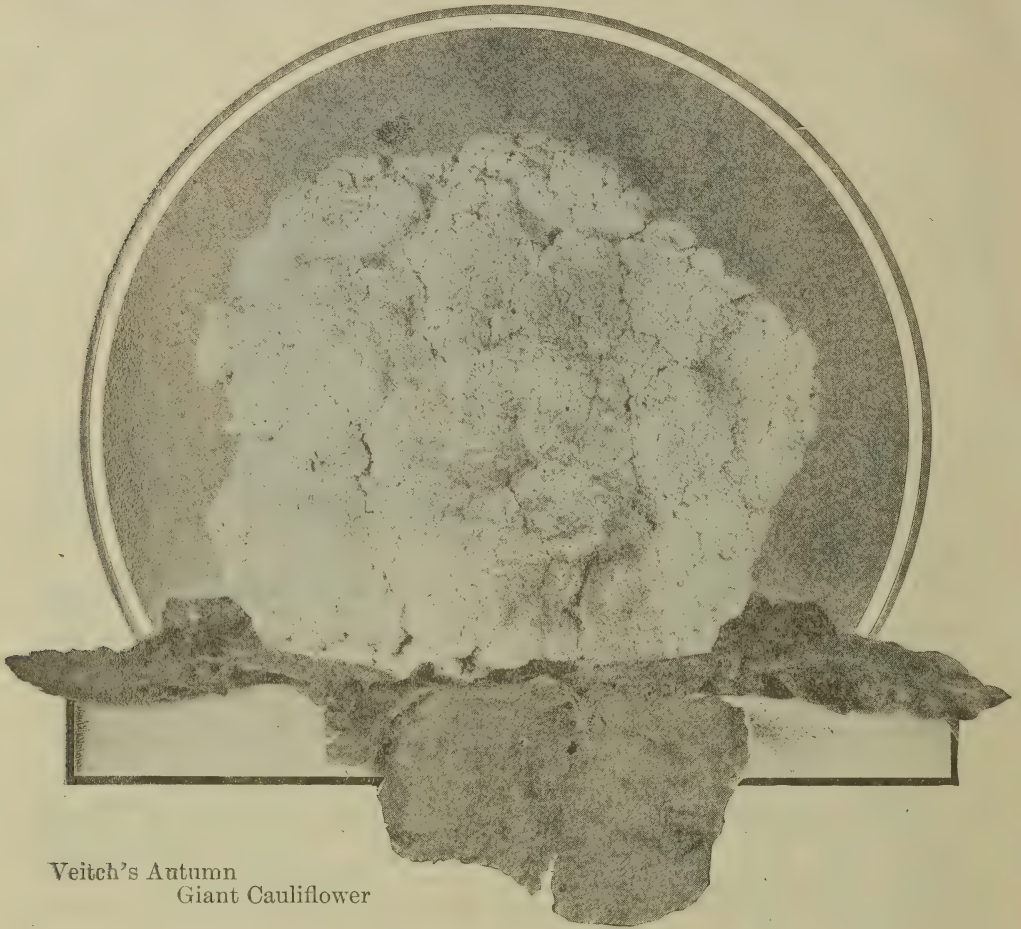
**Giant Pascal.** Extra large growing sort for fall and winter use and planted very extensively. Blanches yellowish-white in color. Stalk tender and crisp. Pkt. 5c, oz. 25,  $\frac{1}{4}$  lb. 75c.

## CHICKORY

**Large-Rooted.** Chickory does extra well in this climate and is considered by many as an excellent substitute for coffee. Plant like a carrot.

## CAULIFLOWER

For late crop, plant seed in open bed, May 1st. Transplant to field from July 1st to 25th,  $3\frac{1}{2}$  by  $3\frac{1}{2}$ . As soon as head shows break leaves over it from all sides. This is better than tying them as the leaves do not turn yellow.



Veitch's Autumn  
Giant Cauliflower

**Burpee's Best Early.** This large, early cauliflower makes extra solid and perfect heads, very tender and brittle. We recommend this as the best cauliflower we have grown. For main crop the seed should be sown June 1st to 10th and transplanted July 20th to 25th. They will head during October. The seed is expensive but will certainly pay you to plant. We have grown this variety for years with gratifying results. Pkt. 25c,  $\frac{1}{4}$  oz. 85c, oz. \$3,  $\frac{1}{4}$  lb. \$10.

**Burpee's Dry Weather.** This variety has exceptional merit in resisting dry weather and we find it the best for the first fall cauliflower as it withstands the dry weather. Similar to Best Early but a little darker foliage. Pkt. 25c,  $\frac{1}{4}$  oz. \$1,  $\frac{1}{2}$  oz. \$1.75, oz. \$3.50.

**Veitch's Autumn Giant.** A hardy tall-growing cauliflower, making extra large white heads. The leaves are dark-green and being extra long can easily be broken over the heads to protect them.

For years we have grown acres of this cauliflower for the Portland market and it has always given good satisfaction.

Stands handling and shipping better than Best Early or Dry Weather.

Pkt. 10c, oz. 50c,  $\frac{1}{4}$  lb. \$1.50.

**California Pearl.** On trial at our farm last season this proved a splendid late cauliflower, heading from October to January 1st. Continuing thru a long season it does not crowd you to harvest. It is more self-protecting than most varieties, the leaves curling about the head. Pkt. 25c, oz. \$2.50.

**Mammoth White Broccoli.** A late variety, season December to February. Long, tapering heavy ribbed leaves, inner leaves curling about the head. While considered a broccoli, it is really only a late cauliflower. Brings fancy prices, but the grower must take chances on freezing in the northern part of the state. Pkt. 10c, oz. 50c,  $\frac{1}{4}$  lb. \$1.25.

**Early Large White French Broccoli.** This variety planted in July heads the next spring in April and is largely sold in Portland as a cauliflower which it really is, broccoli being the name applied to extra hardy cauliflowers. Pkt. 5c, oz. 45c,  $\frac{1}{4}$  lb. \$1.30.

## CORN

Plant early corn as soon as the weather opens up in the spring. Plant 3 or 4 seed to hill, cover one inch deep. Thin to two stalks. Rows  $3\frac{1}{2}$  feet wide, hills 3 feet. Can be planted at intervals until July 1st. Late corn does best planted May 1st to 20th.

**Gill's Portland Market.** This is a highly improved strain of Oakview Market. It is a more vigorous grower, decidedly larger and a heavier yielder than its parent. The Oakview runs from 8 to 12 rows to the ear while this strain carries 12 to 16 rows, some ears even being found with 20 rows. In all of our trials to find an early corn for this section we have found no sweet corn as early and nothing nearly so large or productive. The stalks grow five to six feet high. The ears are large and closely filled with large, broad and sweet kernels. It matures very even and the husk is thin, making it easy to detect the marketable ears. We sold some of this corn last year and all were highly pleased with it. We had several ears last year a foot long of this grand early corn. The seed we offer is from selected ears, hand shelled. Pkt. 10c, lb. 35c postpaid, 5 lbs. or more 20c lb. by E. or F. not prepaid.

**Golden Bantam.** This corn was the sensation of the corn market last summer will be one of the best sellers next season. Without doubt the sweetest, prettiest, and most delicious corn yet in-

duced. The ears are of medium size, set two and three to a stalk. The kernels are of a rich golden-yellow color, which together with its thin skin makes it superior for table use. It is about two weeks later than Portland Market, but stands extra early planting. Whether for market or home garden you cannot afford to miss planting this splendid corn. Seed from ears selected at our farm last summer. Pkt. 10c, lb. 30c, 5 lbs. or more by E. or F. 20c per lb. not prepaid.

**Early Premo.** An early corn of the Early Minnesota type which is very hardy and stands very early planting. Eight and ten rowed, white grained corn. Two weeks later than Portland Market. Pkt. 10c, lb. 30c postpaid.

**Howling Mob.** A large-eared, vigorous-growing, second early corn. Now considered to be the best corn for late use thru this section. It can be planted in succession so as to have corn until frost. Stalks grow 5 to 7 feet, produces ears 12 to 16 rows and is of good flavor. Pkt. 10c, lb. 30c postpaid, 5 lbs. or more at 20c by E. or F. not prepaid.

## POP CORN

**White Rice.** The standard white popcorn, matures well here.

**Red Rice.** The best red popcorn. A week earlier than the White Rice.

Either variety, Pkt. 5c, lb. 25c postpaid.

## CUCUMBER

Plant 4 feet each way in rich loamy soil, from April 15 to June 1. 8 to 10 seeds to hill; thin to three good vines. Cover seeds one inch deep and press firm.

**Davis' Perfect.** This new cucumber is taking front rank for a garden or slicing cucumber. The most vigorous and thrifty grower we have tried. Produces a heavy yield of uniform, long, dark-green cucumbers. Holds its color good after marketing. Pkt. 5c, oz. 15c,  $\frac{1}{4}$  lb. 50c, lb. \$2 postpaid.

**Improved Long Green.** Extra long, large cucumbers, fine for slicing, pickling, or for sweet pickles when ripe. A very vigorous and healthy grower. Pkt. 5c, oz. 20c,  $\frac{1}{4}$  lb. 50c, lb. \$1.50 postpaid.

**Emerald.** An intensely dark green cucumber with very smooth skin. It positively will not turn yellow when picked,

even when ripe remains dark green. Flesh is crisp, white and tender. Fine for shipping. Pkt. 5c, oz. 20c,  $\frac{1}{4}$  lb. 35c, lb. \$1.50 postpaid.

**Japanese Climbing.** An exceptionally fine slicing cucumber, being very free from any bitter taste. Heavy yielder of large, long cucumbers. Pkt. 5c, oz. 20c,  $\frac{1}{4}$  lb. 50c.

**Thorburn's Everbearing.** Bears continuously throughout the season of medium-sized cucumbers which are fine for pickling. Pkt. 5c, oz. 20c,  $\frac{1}{4}$  lb. 50c.

**Snake Cucumbers.** A great curiosity for fairs. Long cucumbers, 3 to 5 feet long, which curl like a snake. Pkt. 10c.

## KALE

Culture, same as that of cabbage.

**Dwarf German.** Finely curled, low growing.

**Tall Green, Scotch Curled.** Tall and finely curled leaves. Pkt. 5c, oz. 15c.

**Thousand-Headed Kale.** Planted extensively for green feed during winter for stock. Our seed is grown from selected plants. Pkt. 5c, oz. 10c,  $\frac{1}{4}$  lb. 20c, lb. 60c.

## KOHL RABI

**Early White Vienna.** The best for table use. Kohl Rabi should be more grown, as it is a delicious vegetable cooked like turnips. Transplant like cabbage in July, rows  $3\frac{1}{2}$  feet wide and 2 feet in rows. Pkt. 5c, oz. 25c.

## LEEK

Culture same as onions.

**Monstrous Carentan.** Large size. The best. Pkt. 5c, oz. 20c,  $\frac{1}{4}$  lb. 50c.

## LETTUCE

Can be planted most any time of the year. Give head varieties plenty of room. Cover one-half to one inch deep.

**New York.** A superior head lettuce of large size, the outer leaves dark green, the center of the head a golden yellow color. The leaves are thick, brittle and tender. We recommend this strongly. Pkt. 5c, oz. 25c.

**Hanson.** The old standby is still to the front for a head lettuce. Leaves crinkled, tender and crisp, lacking the bitter taste found in some solid heads. Pkt. 5c, oz. 25c.

**Decor.** Stands hot weather well, heads light green outside, inner portion

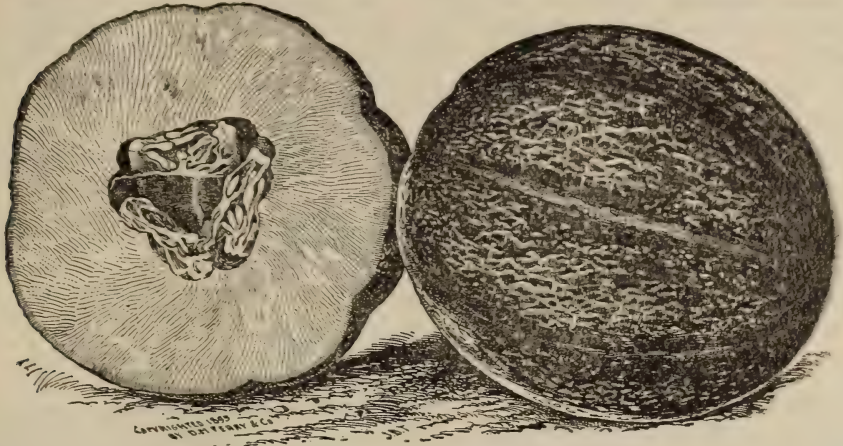
creamy yellow with fine buttery flavor. Pkt. 5c, oz. 20c,  $\frac{1}{4}$  lb. 50c.

**Tomhannock.** A beautiful loose-leaf lettuce with a reddish-brown border to the edge of the leaf. A quick grower of very tender, sweet leaves, entirely free from bitterness. Can be eaten with relish in the patch. Pkt. 5c, oz. 20c.

**Grand Rapids.** The standard hothouse lettuce for forcing, also does fine in the open ground. Loose leaves of a light-green color and fringed edges. Pkt. 5c, oz. 20c,  $\frac{1}{4}$  lb. 60c.

## MUSK MELONS

Plant from May 10th to 20th, according to the weather, in rows five feet wide and  $4\frac{1}{2}$  to 5 feet in the row, adjusting to the size of the variety planted. Plant 8 to 10 seeds in a hill. Thin to two best vines after first leaves appear.



Original Gauntier Pineapple Musk Melon.

**Emerald Gem.** Truly the gem of red-fleshed melons. The dark green fruit is of medium size, flattened at both ends. The flesh is thick, sweet and melting, with a rich, spicy flavor. An early melon, well adapted to this section. The melon has few nettings, but our seed is saved from the more netted types. Pkt. 5c, oz. 30c,  $\frac{1}{4}$  lb. 90c, lb. \$3.

**Early Green Citron.** The earliest of all musk melons and will ripen where no others will. Flesh whitish green, but not as rich flavored as the later sorts. Pkg. 5c, oz. 25c.

**Original Gauntier Pineapple.** We consider this the best green-fleshed melon we have tried here. The melons are elongated in shape, heavily netted, the flesh thick and dark green in color; sweet and spicy flavored. A good shipper, ripens early. Pkt. 10c, oz. 30c,  $\frac{1}{4}$  lb. 75c, lb. \$2.25 postpaid.

**Lewis' Perfection.** A large, heavy-ribbed, dark green melon, of large size, sometimes weighing ten pounds apiece;

flesh thick and salmon colored. A good market melon and fairly early. Pkt. 5c, oz. 35c,  $\frac{1}{4}$  lb. \$1.

**Livingston's Ohio Sugar.** This grand new melon, while not early, will ripen in this section. The melon is of medium size, nearly round, grey-green in color, flesh thick, dark green, exceptionally sweet. Considered a good shipper. Claimed by Mr. Livingston to be the sweetest melon in existence. Pkt. 10c, oz. 40c,  $\frac{1}{4}$  lb. \$1.25, lb. \$4.50.

**Bay View.** A large, long shaped melon, green fleshed, an early ripener; does well in this climate. Pkt. 5c, oz. 25c,  $\frac{1}{4}$  lb. 45c.

**Banana.** Long fruit, fifteen to twenty inches, flesh salmon colored. A curiosity as well as being good to eat. Pkt. 5c.

**Burpee's Spicy.** This new melon is of good size, fairly early, has good shipping qualities. The salmon colored flesh is very thick and exceptionally sweet and melting. This melon is well adapted to this climate. Pkt. only at 10c each.

## WATER MELONS

Plant 8 to 10 seeds in hills 6x6. Thin to 2 best vines. Turn vines with the row. Plant May 1st to 20th.

**Hungarian Honey.** A small, round, thin-rinded melon with rich, red flesh. Extra early and sure to ripen even in the coolest season. Those who try it once will always have them in the garden for home use they are so sweet. Pkt 5c, oz 20c,  $\frac{1}{4}$  lb 50c.

**Kleckley Sweets.** A medium early melon, 18 to 20 inches long and 9 to 12 inches thick, one of the sweetest of watermelons. Good for near markets. Pkt 5c, oz 15c,  $\frac{1}{4}$  lb 35c, lb \$1.25.

**Preserving Citron.** Red-seeded, oval fruits, used for preserves. Pkt 5c, oz 15c.

## ONIONS

Plant in February or March in drills 12 to 14 inches wide. Cover  $\frac{1}{4}$  inch, then to 3 or 4 inches.

**Oregon Yellow Danvers.** This variety is planted very extensively throughout the Northwest. The onions are large, half globe shape, with small necks; early and a very heavy yielder. Pkt. 5c, oz. 20c,  $\frac{1}{4}$  lb. 70c, lb. \$2.

**Michigan Yellow Globe.** Claimed to be especially adapted to rich, black lands. The bulbs are large and uniformly spherical, with very small necks; the largest diameter below the center of the bulb of a rich, orange yellow color, enormous yielders and splendid keepers. Pkt 5c, oz 20c,  $\frac{1}{4}$  lb 75c, lb \$2.

## PARSLEY

**Dark Moss Curled.** Dark green, moss-like leaves. A good variety. Pkt 5c, oz 10c,  $\frac{1}{4}$  lb 25c, lb 75c.

## PARSNIPS

**Gill's Tender Heart.** This strain is developed from seed we received over twenty-five years ago from an old resident in Portland, which proved so far superior to any other that we never ran out of the seed but have been selecting from the best from year to year. Unlike other parsnips the heart is tender, never tough, roots are smooth, hollow crown, thick and heavy at the top, tapering abruptly, making it easy to dig. We have the exclusive seed of this champion garden or market parsnip. Do not fail to try this parsnip for it is unexcelled anywhere. Pkt 5c, oz 15c  $\frac{1}{4}$  lb 40c, lb \$1.

## PEAS



EARLY MORN

Plant as soon as the ground becomes warm enough to work. Early started peas do the best.

**Early Morn.** This grand new pea is the earliest of the wrinkled peas; ahead of either Gradus or Thomas Laxton. The size of the pods is enormous for such an early pea, many pods containing eight to ten peas. This is an exceptionally heavy yielder and vigorous, growing three to four feet high. The coming money-maker in peas. Our supply is very small and we can only offer 1 oz pkts at 10c. This will enable you to test them yourselves.

**Thomas Laxton.** An extra early, wrinkled pea only three or four days later than Gradus. Pods square at the ends, dark green color. The sweetest of

the first early peas and a very heavy producer. Vines grow two to three feet high. True seed. 2 oz pkt 10c, lb 25c. Postpaid, E. or F, 5 lbs or more 15c lb.

**American Wonder.** This old stand-by is too well known to need description. A dwarf, early growing pea, very productive and sweet as sugar in flavor. True seed, 2 oz pkt 10c, 1 lb 25c, postpaid; E. or F. 5 lbs or more 12c lb.

**Telephone.** The standard main crop pea, tall growing habit, vine, pod and peas of light green color and enormous yielder, and one of the best sellers on the market. True seed. 2 oz pkt 10c, lb 25c postpaid; by E. or F. lb 20c.



**Prodigious.** Enormous pods six to seven inches long, containing nine to ten peas of superior quality. A larger pea and more vigorous in growth than the Telephone. This pea makes a splendid market pea. Our stock is limited. Pkt 10c, lb 35c postpaid.

**Gill's "String Bean" Pea.** Here is a pea you don't need to shell, but simply string like a bean, cooking pod and all. The pod is tightly filled with light green peas of sweetest flavor. Medium habit of growth and very productive. We have grown this for years. To our knowledge it is not catalogued elsewhere. Try a packet of these in your garden. Pkt 10c.

## PEPPERS

Start plants in hot beds or in pots in a warm room in March. Transplant in open ground May 10 to 20, rows  $3\frac{1}{2}$  feet wide, 2 feet in rows.

**Crimson Giant.** Decidedly the best pepper for the Northwest. Extra large peppers, three to four inches thick and five to six inches long, of beautiful crimson when ripe. Their large size make them

fine for stuffing. It ranks among the earliest and most prolific. Similar to Chinese Grant. Our own grown seed. Pkt 10c,  $\frac{1}{4}$  oz 20c,  $\frac{1}{2}$  oz 35c, 1 oz 65c,  $\frac{1}{4}$  lb \$1.80.

## PUMPKINS

**Winter, Luxury Pie.** This is fast becoming the standard pie pumpkin wherever it becomes known. We were among the first to introduce this pumpkin to the Portland trade and have many customers who will refuse every other. Medium sized, covered with heavy nettings, the flesh is thick, of rich yellow color and cooks fine grained without strings, and requires much less of eggs to make good pies than other kinds. A good keeper and very prolific. Our strain of seed produces fruit of rich, orange colored skin, while that usually offered is of lemon yellow type. We have also bred up the size of this pumpkin. Pkt 10c, oz 20c,  $\frac{1}{4}$  lb 40c, lb \$1.25.

**Connecticut Field, or Jack O'Lantern.** The common field pumpkin grown for stock feeding and jack lanterns. Some prefer

it for pies. Our seed is carefully selected for jack lantern shapes. Rich orange colored skin. Pkt 5c, oz 15c,  $\frac{1}{4}$  lb 25c, lb 65c.

**Small Sugar.** Small, deep orange yellow pumpkins, slightly ribbed, flesh sweet and fine for pies.

**Thanksgiving, or Improved Large Cheese.** Heavy, thick meated pumpkins with deep salmon flesh, cooks fine grained and sweet, excellent for pies. Rather flat fruit, half orange color. A heavy yielder and fine for stock. Pkt 5c, oz 15c,  $\frac{1}{4}$  lb 40c, lb \$1.25.

**Red Etampes.** Heavy, thick meated pumpkins of flat shape and large size. Enormously productive, good for stock feed and canning. Deep red orange skin and flesh. Pkt 5c, oz 15c,  $\frac{1}{4}$  lb 40c, lb \$1.

## POTATOES

Plant early kinds as early as the ground will work. Late varieties June 1st to 15th. Rows  $3\frac{1}{2}$  feet wide, 20 inches in row. Cut to one or two eyes.

**Eureka Extra Early.** White skinned tubers, slightly flattened, flesh very white and mealy. The earliest of all white potatoes we have yet tried. lb 25c, 3 lbs 60c. postpaid. By E. or F. 25 lbs or more 4c lb.

**Early Albino.** Among the very first to mature, medium length, slightly roundish, pure white skin, very vigorous plant. White potatoes are fast driving out the colored stock, and in this we have a good yielding white potato that will sell, lb 30c, 3 lbs 60c. By E. or F. 25 lbs or more 4c lb.

**Early Michigan.** A few days later than the Early Albino but a heavier cropper. Pure white long flat shaped tubers of splendid cooking qualities. Fully as good a yielder as Early Rose and far more saleable besides being earlier. lb 25c, 3 lbs 50c. By E. or F. 25 lbs or more 2c lb, seed size.

**Early Sunrise.** Long white tubers of fine quality and a heavy yielder and is being largely planted instead of Early Rose. lb 25c, 3 lbs 50c. By E. or F. 25 lbs or more 3c lb.

**Beauty of Hebron.** Light pink potato of Early Rose form; a good yielder and noted for its splendid baking qualities. Prices same as Sunrise.

**Burpee's Extra Early.** Rather long, oval shaped tubers of fine cooking quality. Light pink with white marking, a heavy cropper. 1b 25c, 3 lb 50c. By E. or F, 25 lbs or more 3c lb.

## SECOND EARLY VARIETIES

**Knowles' Big Cropper.** A new white potato of great merit. The first year we planted it one pound produced over 100 pounds. In our field it was the most vigorous grower of them all and yielded heavy, even under poor circumstances. Tubers rather long and somewhat inclined to be flat. They cook fine and do

not burst when boiled. Don't miss trying this new potato. 1b 30c, 3 lbs 60c postpaid, by E. or F. 25 lbs or more 4c lb.

**American Wonder and Early Rose.** True seed of these, 3 lbs postpaid 45c. Write for prices in quantity.

## LATE VARIETIES

**Snow.** A new white potato of fine appearance and quality. Every potato grows perfect in shape, roundish, slightly flattened with snow white skin and flesh. Does well, producing few small potatoes even in poor soil. 1b 30c, 3 lbs 60c. By E. or F. 25 lbs or more 4c lb.

most kinds. 1b 25c, 3 lbs 50c. By E. or F. 25 lbs or more 3c lb.

**Green Mountain Jr.** A fine keeping late potato of round, slightly oblong shape, pure white in color. Few small or uneven potatoes. A very heavy producer. 1b 25c, 3 lb 55c postpaid, 25 lbs or more by E. or F. 3c lb.

**Norcross.** This variety is white skinned, fine grained and a very heavy yielder, withstanding dry weather better than

**Burbanks and Garnet Chilli.** Write for prices.

## RADISH

**Crimson Giant.** A crimson turnip shape radish that combines large size with extreme earliness. A splendid radish that does not go pithy very soon. Pkt 5c, oz 15c,  $\frac{1}{4}$  lb 35c, lb \$1.

**Bright Breakfast.** Similar to the popular French Breakfast, but brighter in color. Small top, very early. Pkt 5c, oz 15c,  $\frac{1}{4}$  lb 30c, lb 90c.

**White Pearl.** The best of the white radishes, roots five to seven inches long, of a beautiful pearly white color. Stands fine without going woody. Similar in shape to White Icicle but superior in quality. Flesh tender, crisp and sweet. Pkt 5c, oz 15c,  $\frac{1}{4}$  lb 35c, lb \$1.

**Early Scarlet Turnip, White Tipped.** Turnip shaped radishes, scarlet with white tips. A popular market radish sold by the vegetable men the year around. Excellent quality and extremely early. Pkt 5c, oz 15c,  $\frac{1}{4}$  lb 30c, lb 90c.

**Cincinnati Market.** An excellent radish of scarlet color, five to seven inches long, very thin skin, flesh crisp, brittle of delightful flavor. One of the very best long red radishes. Seed from the introducer. Pkt 5c, oz 15c,  $\frac{1}{4}$  lb 25c, lb 90c.

**Long Black Spanish.** Long black winter radish. Sow in August. Pkt 5c, oz 15c,  $\frac{1}{4}$  lb 25c, lb 85c.

**Scarlet China.** Roots of bright scarlet color, fine quality. Sow in September for winter use. Pkt 5c, oz 15c,  $\frac{1}{4}$  lb 30c, lb 90c.

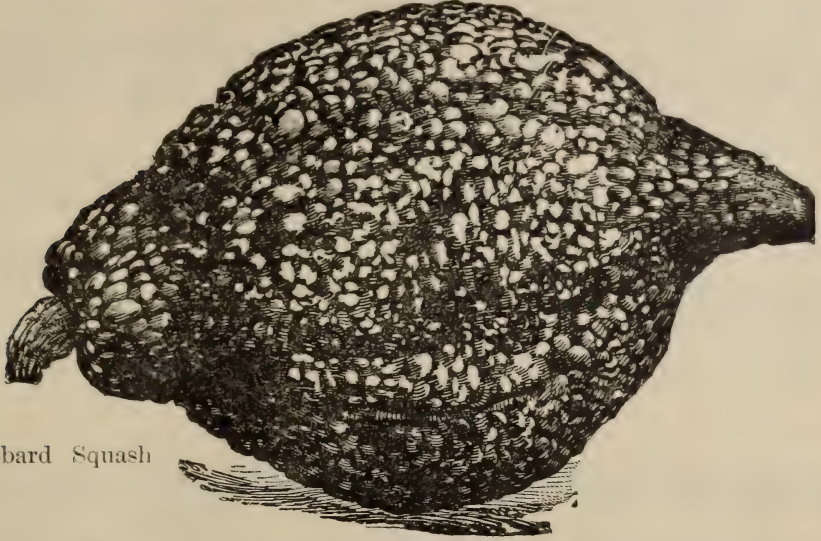
## SALSIFY

**Mammoth Sandwich Island.** The largest and best variety, long white roots. Pkt. 5c, oz. 20c,  $\frac{1}{4}$  lb. 45c, lb. \$1.50.

## SQUASH

Plant from May 10th to 20th in hills 10 ft by 10 ft. 8 or 10 seeds to the hill. Thin to two strong vines.

Sow 200 pounds of land plaster to the acre and plow in.



Hubbard Squash

**Delicious.** Mr. Gregory's late introduction, we consider the finest grained, dryest cooking and sweetest squash in cultivation. Of medium size, top shaped with greenish-black skin, flesh very thick, orange-colored with small seed cavity. Try this squash and be convinced that it is the best that grows. True seed of our own growing. Pkt. 10c, oz. 20c,  $\frac{1}{4}$  lb. 50c, lb. \$1.50.

**True Hubbard.** The standard squash, and while we do not consider it equal to the Delicious in flavor, it is a heavier yielder and is better known in the market. We have a true stock of seed. Pkt.

5c, oz. 20c,  $\frac{1}{4}$  lb. 45c, lb. \$1.25.

**Symes' Blue Hubbard.** Of light bluish-green color. This new introduction of Mr. Gregory, the squash man, convinced us last season that it would yield heavier than the Hubbard and the quality is as good or better. Similar in shape to the Hubbard. The shell is very hard and will no doubt be a fine keeper. Our seed is grown from seed secured of Mr. Gregory, but our supply is very short. Pkt 10c, oz 25c,

**Strickler's Summer Crookneck.** Grows larger than the common sort. Fine for summer use. Pkt 5c, oz 15c,  $\frac{1}{4}$  lb 30c.

## TOMATOES

**Gill's Select Earliana.** The earliest, smooth, first-class tomato, and will ripen a full crop in the northwest states. Fruit a bright red, very smooth, deep from stem to blossom end, very solid with few seeds and of fine flavor. Sets plenty of tomatoes that ripen in a short season. Our seed is from carefully selected tomatoes of perfect shape and will give good results. Pkt 10c,  $\frac{1}{2}$  oz 30c, oz 50c,  $\frac{1}{4}$  lb \$1.50, lb \$5.50.

**Bonney's Best Early.** In our field here last summer this proved to be a fine tomato. The tomatoes are large, smooth and ripen even to the stem. A very solid tomato of a bright scarlet color, very uniform in shape, making them a

fine shipper. They brought 10 cents more a box with us than other varieties ripe at the same time. About two weeks later than Earliana. The best main crop later tomato for this section. Pkt 10c,  $\frac{1}{2}$  oz 30c, oz 60c,  $\frac{1}{4}$  lb \$1.60.

**Livingstone's Favorite.** One of the best, largest, perfect-shaped, bright-red tomatoes. Very solid meated, of extra fine flavor, with few seeds, a good shipper, makes it a worthy tomato for main crop, especially for canning. Pkt 5c, oz 40c,  $\frac{1}{4}$  lb \$1.

**Yellow Pear.** Used for preserving, extra early and produces an abundance of yellow pear-shaped tomatoes. Pkt 5c, oz 40c.

## TURNIPS

Plant broadcast from Aug. 1st. to 20 th.

**Purple-Top White Globe.** Globe shaped, very smooth, white turnips with purplish red tops, making a pretty contrast. Sweet and tender, and a good yielder. Pkt 5c, oz 15c,  $\frac{1}{4}$  lb 30c, lb 75c.

**Pomeranean White Globe.** A large globe-shaped, smooth, white turnip. Good either for stock or table and resists the

worms the best. Pkt 5c, oz 15c,  $\frac{1}{4}$  lb 25c, lb 75c.

**White Egg.** A quick-growing, egg-shaped, smooth, pure white variety with flesh very sweet, firm and mild. The best table turnip. Pkt 5c, oz 15c,  $\frac{1}{4}$  lb 25c, lb 75c.

## RUTA BAGA

**Improved Purple-Top Yellow.** We find this the best all-around Ruta Baga. Produces nice smooth globe-shaped roots free from side roots. The best for table use and very rich and productive for

stock feeding. It is early and will mature good roots, planted late in the season. Good seed from selected roots. Pkt 5c, oz 15c,  $\frac{1}{4}$  lb 25c, lb 75c.

## TOBACCO

Burn a bush heap and sow the seed on this place as soon as it rains, early in April. Transplant about June 20 to 25.

## VEGETABLE ORANGE

Grow somewhat like a musk melon, small-sized round shaped, orange colored fruit, fine for sweet pickles and preserves, yields heavy in this climate. Pkt 5c

## MISCELLANEOUS

**Dill.** Used as a condiment and for flavoring cucumber pickles. Pkt 5c, oz 10c,  $\frac{1}{4}$  lb 25c.

**Broom Corn (Hog Millet).** This extra early millet planted in May will mature in August. Grows with a branching habit, large, heavy heads, often weighing an ounce. The seeds ripen while the stalk is still green, thus growing ripe grain and green fodder at the same time. The seeds are large, of a deep, orange-brown color. An enormous yielder, producing more than ten tons of cured fodder to the acre. The seeds are excellent for poultry and hogs while sheep are fond of the fodder. Does best drilled in rows wide enough to permit cultivation. Pkt 5c, lb postpaid 25c, E or F 5 lbs or more 15c per lb.

**Early Amber Sugar Cane.** The earliest maturing variety. Oregon seed. Pkt 5c, oz 15c.

**Russian Flaxseed.** An early maturing variety that does well here. We have a few home grown seed if you wish to try it. Pkt 5c.

**New Swedish Oats.** The largest oat we have ever grown and a remarkable yielder. The grain with the hull removed is as large as the common kinds with the hull on. A tree oat that grows on heavy stalks that will not lodge. This oat is fastcoming to the front and you should at least try it on a small scale. Our stock is short. By E. or F., 50 lbs or more, at 4c per lb. By mail, 3 lbs 45c postpaid.

**Golden Fleece Oat.** Grain of a pretty golden color, thin hulls, straws stiff, of uniform height, a good yielder. Ripens early. By mail, postpaid, 3 lbs. for 35c. Write for prices in bulk.

**Sunflower.** Mammoth Russian Giant heads with large seed. Pkt. 5c, oz 10c, lb 30c.



# Flower Seeds



## ASTERS

Plant the seed in a box inside, or in a hotbed in March. Transplant to open ground May 1st. The seeds we offer are of the newest and best strains, while more expensive, they will give the best results.

**Giant White Comet.** Large flowers of pure white, broad waved and twisted petals. Pkt 10c.

**Giant Ostrich Plume Mixed.** Very large flowers of perfect shape, 4 to 6 inches in diameter, long twisted petals. Pkt 10c

**Crego's Giant Pink** Grows 2 feet high, artistic, fluffy, graceful flowers, fine as any chrysanthemum. Pure white. Pkt. 10c.

**Vick's Pink Mikado.** Among the best of the Comet type. One of the best asters to date, a beautiful shell pink. Pkt 15c.

**rego's Giant White.** Same as above except color which is a soft shell pink. Pkt 10c.

**Vick's White Mikado.** Same as above except it is pure white. Pkt 15 cts.

**Miss Roosevelt.** New aster of clear primrose tint which changes to delicate flesh color. Pkt 10c.

**Gill's Fancy Mixed.** A splendid mixture of colors of Comet and Branching asters. Our own grown seed. Pkt 5c.

Plants of any variety ready in April, 20c per dozen, postpaid.

## COSMOS

Cosmos should be planted in open ground during April. They are easy to grow and make one of the finest cut flowers known, as well as being a fine hedging plant for back ground effect.

**Gill's Finest Mixed.** Embracing pink, white, rose and crimson colored flowers. Pkt 5c.

size of lovely shell pink color. Pkt 10c.  
**White.** Pure white flowers. Pkt 5.

**Lady Lenox.** A new cosmos of immense

**Early Flowering Cosmos.** Early flowering type, mixed. Pkt 10c.

## NASTURTIUMS

Plant in open ground any time danger of frost is over, in rows, thinning to 4 inches apart.

**Surprise Tall Mixed.** Trailing. The best for porches. This mixture comprises nearly every color known in nasturtiums. Our own grown seed. Pkt 5c, oz 15c.

**Dwarf Mixed.** Of dwarf, compact, rounded growth, a splendid assortment of colors of our own growing. Pkt 5c, oz 15c.

## PETUNIA

**Burpee's Defiance Largest Flowering Petunia.** The largest strain with fringed petals. Mixed colors. Pkt 15c.

## PANSY

**Giant Pansy Mixture.** An unequalled mixture of large flowering pansies. Contains all colors and will prove a surprise to all who grow them. Pkt 10c.

Plants ready in April. 20c per dozen, prepaid.

## SWEET PEAS

### SPENCER TYPE

The Spencer Type represents the very best and most up-to-date class of sweet peas. The flowers are of great size, the petals waved and fringed. They are shy seeders, making them more expensive, but decidedly worth while. The following are new and high grade varieties,

**Miriam Beaver Spencer.** A new, glowing apricot, tinted, shaded and suffused with lemon. Pkt 15c.

**W. T. Hutchins.** Light apricot overlaid with beautiful blush pink. Pkt 15c.

**Senator Spencer.** Color is a varying combination of deep claret and chocolate striped and flaked on a ground of light heliotrope. Pkt 15c.

**King Edward Spencer.** A deep rich carmine, very gigantic in size. Pkt 10c.

**Othello Spencer.** A rich deep maroon, almost black. Pkt 10c.

**Marie Corelli Spencer.** Large flowers, brilliant carmine. Pkt 15c

**Burpee's White Spencer.** Pure white wavy flowers of giant size, largest of all white sweet peas. Pkt 10c, oz 20c.

**Helen Lewis Spencer.** Orange standard pink wings of gigantic size. Pkt 10c.

**Gigantic Spencer, Mixed.** A mixture, the best and standard Spencers. Pkt 10c, oz 25c.

**Gill's Rainbow Mixture Sweet Peas.** This mixture comprises more colors than any

mixture we have ever seen grown. Every shade imaginable in sweet peas. In our field last summer they were admired by all who saw them. It comprises both Spencer and Exford types. We feel confident this is the most complete mixture ever sent out. Fine plump seed of our own raising. Pkt 5c, oz 10c,  $\frac{1}{4}$  lb 25c, lb 75c, postpaid. Don't fail to try this mixture.

## POPPY

Plant shallow in early spring

**Giant Double Mixed.** A dazzling mixture of all colors and tints of the richest and softest shades of double flowers. Grows 2 to 3 feet high with flowers 4 inches in diameter. Pkt 5c.

**Mixed Shirley.** Single flowers of the most remarkable coloring, ranging from the softest to the brightest tints. Very

easy to grow and very showy both for bedding and cutting. We offer a high grade mixture of our own grown seed. Pkt 5c.

**Cardinal Poppy.** Very large and double of beautiful fringed appearance. Color, rich, cardinal red. Pkt 5c.

## SALVIA, Flowering Sage

**Splendens.** Large, brilliant scarlet flowers, belonging to the sage family. Long spikes well above the foliage. Plant in heat and transplant. Pkt 10c.

**Patens.** One of the finest blue flowers known. Pkt 15c. Plants 25c per dozen postpaid, ready in April.

## SNAP DRAGON

**Gill's Superior Mixed.** A fine mixture comprising every color known in snap dragon from pure white to darkest red with many blends and variations. Start in a box in warm room or hotbed and transplant to open ground May 1st. Our own grown seed. Pkt 5c. Plants 15c per dozen postpaid, ready in April.

## SUNFLOWER

Plant as soon as danger of frost is over and ground is warm.

**Double Chrysanthemum, Flowered.** Tall plants 7 feet high, blooming profusely all summer. Rich golden yellow flowers, very double, resembling chrysanthemums. Pkt 5c.

## SWEET WILLIAM

**Hardy Perennial.** Sow in hot bed in March transplant as soon as season is open. Will bloom first year in the fall if seed is planted in open ground.

**Fine Mixed.** A fine mixture of colors. Pkt 5c.

**Double Mixed.** Many colors of double flowers. Pkt 5c.

Plants of above sorts at 15c per doz postpaid. Ready in April.

## VERBENA

Soak seed in warm water; sown in May will bloom in August.

**Fordhook Famous.** Largest and best strain embracing rich and varied colors of brightest hues. Pkt 10c.

## ZINNIAS

Sow in open ground as soon as it becomes warm.

**Finest Double Mixed.** A good selection of colors. Pkt. 5 cts.

## HOLLYHOCK

This grand stately old flower is fast coming back into popular favor. Plant seed in the fall or in hot bed in the spring.

**Extra Choice, Double Mixed.** Grand assortment of colors. Pkt 10c. Young plants, 20c per dozen postpaid.

## CANTERBURY BELLS

Plant in open as soon as warm. They bloom the second season.

**Finest Mixed.** All colors. Pkt 10c. Young plants 15c per doz postpaid.

## ORNAMENTAL GOURDS

**Mixed Varieties.** Over a dozen different kinds. Pkt 5c, oz 25c.



# Plants and Bulbs



## DAHLIAS

### CULTURE

Dahlia bulbs should be planted from April 20th to May 10th, according to the condition of the soil and weather. The bulbs are shaped much like sweet potatoes, with eyes only near their junction with the old stalk and should be planted on about one-third slant, the eye or sprout nearest the surface. The eye should be from three to four inches below the surface. As soon as the sprouts have made a few inches growth remove all but one of the strongest, cutting the others off below the surface. Be sure to give them plenty of room, especially if so situated that you cannot water them. We plant for field culture 4 by 6 feet, however, if they receive frequent watering they may be planted 3 by 4 feet. The flowers should be cut, not broken, frequently and never allowed to dry on the bushes. As soon as the plants have made much growth they should be hoed and worked, very shallow, or they will be injured. If unwatered a dust mulch should be established over the whole surface; if watered the surface should be stirred after each application of water.

### CLASSES

There are several classes of dahlias which will be found classified in our list. Dahlias originated in Mexico and were named Dahlia in Spain after a Swedish botanist by the name of Dahl.

**SINGLE DAHLIAS.** No doubt the oldest class. One row of petals with large open centers.

**SHOW DAHLIAS.** These have double ball-shaped flowers with cupped and quilled petals. An old class that is still very popular. Many prefer it to all other classes.

**CACTUS DAHLIAS.** This class has brought the dahlias to the front very rapidly. Petals run from narrow to medium width, long and pointed, some standing out straight, some slightly reversing while others, the newest type curve to the center. In form resembling a cactus or chrysanthemum.

**DECORATIVE DAHLIAS.** Broad, flat petals of large size, generally reversing slightly towards the stem. In this and the paeony class are found the largest blooms.

**FANCY DAHLIAS.** These are simply stripped and spotted flowers which may belong to either show or decorative classes.

**PAEONY-FLOWERED DAHLIAS.** These are semi-double flowers with long, broad, slightly twisted petals. However, those of the Cactus Paeony type are narrow-petaled.

**POMPON.** Miniature show Dahlias of perfect form.

## Ten Reasons Why You Should Plant Dahlias

1. They are second only to the rose.
2. They are the showiest flowers in existence.
3. Free blooming plants that flower from July 1st till frost, when other flowers are scarce. We picked our last bouquet last season on November 20th.
4. You have more variations in color in the Dahlia than any other flower.
5. They are easy to grow, requiring little trimming and spraying.

6. They last finely as a cut flower.
7. In the different varieties may be found the brightest tones and the softest hues and the most charming blends known in flowers.
9. With so many classes you can have several different sorts of flowers all in one species.
10. They make fine hedge effects. Some plant them between roses and thus keep up a continuation of flowers thru the whole season.

We guarantee our Dahlias true to name, but sometimes accidents may occur, in which case we will send a new bulb the following season without expense to you.

Our bulbs are field grown roots with good eyes.

Dahlia orders will be filled during March, April and May.

## DAHLIA COLLECTIONS

These collections represent the best values in choice varieties, chosen with regard to color. Name attached to bulb, no two alike.

### No. 4

12 Cactus Dahlias, our own selection, \$1.25 postpaid. 6 for 70c.

### No. 5

6 Decorative Dahlias, our own selection, 60c postpaid.

### No. 6

6 Show Dahlias, our own selection, 50c postpaid.

### No. 7

12 Show and Decorative Dahlias, our own selection, \$1 postpaid.

### No. 8

3 Cactus, 3 Decorative, 3 Show, 1 Fancy, 1 Paeony, 1 Pompon, Dahlias, 12 in all, our own selection, \$1.25 postpaid.

## DISCOUNT ON DAHLIAS

Anyone ordering over \$5 worth of Dahlias may select Dahlia bulbs to the value of 10 per cent. of amount of order, free. This does not include collections.

## DAHLIA SEED

Choice seed saved from perfect flowers of Cactus, Show, Decorative and Fancy Dahlias, from plants grown in our field last summer. Pkt. 15c. Dahlias from seed are the source of new varieties and much interest is established in growing them. Start in hotbed, plant out in May.



# GILL'S NEW AND STANDARD CACTUS DAHLIAS



Cactus Dahlia, Luraina

## RED SHADES

**Aeger.** Rich cardinal red, twisted petals. A splendid flower. A free bearer. Each 50c.

**Amos Perry.** Free, early, large, flowing fiery red. Each 25c.

**Autumn.** Long, pointed, tubular petals. Bright rosy scarlet suffused with salmon. Very fine. Each 35c.

**Blitz.** Early, free flowering, rich and brilliant geranium lake of fine form, narrow incurved petals. Much admired last season. Each 30c.

**Berlichingen.** Deep crimson carmine, shading to bright carmine at the tips, very showy. Each 25c.

**Dreadnough.** Large, deep, ox blood red. Each 20c.

**Flamingo.** Brilliant vermilion. Long pointed petals, named from the flamingo bird, an indescribable, brilliant color. Each 25c.

**Gen. Buller.** Cardinal red petals, tipped white. Each 15c.

**H. Shoemith.** Brilliant carmine red, long, narrow petals. The finest petals of any cactus. Each 35c.

**H. W. Sillem.** Large, perfect of rich cardinal red color, very fine. Each 35c.

**J. H. Jackson.** Brilliant crimson maroon. Each 20c.

**Loogalu.** Broad petaled, full double flowers, orange scarlet, with carmine shadings. Each 20c.

**Mrs. J. Harrison.** Intensely rich oriental red, good size, perfect form. Each 35c.

**Mrs. F. Grinsted.** Deep rich crimson suffused purple, incurved flower of fine form. Each 35c.

**Mrs. Henry Wirth.** Grand new dahlia of glowing fiery scarlet, early and free bloom, medium light. One of the best reds. Each 75c.

**Progantor or Staghorn.** Bright carmine, petals divided at the tips, giving a poppy appearance. Each 25c.

**Roland Von Berlin.** Brilliant and intense geranium red with deeper shading and full of fire. Each 35c.

**Rother.** Rich, bright garnet, rather dwarf habit. Fine dark colored sort. Each 35c.

**Standard Beaver.** Rich fiery scarlet, free, perfect form. Each 25c.

**Strahlen Krone.** Rich and glowing, cardinal red. The flower was much admired in our grounds last season. Free bloomer. Each 50c.

**Harbor Light.** Vivid orange red, shading to flame at the points, very striking. Each 50c.

**Ignea.** One of the best scarlet cactus. Immense size with extremely double flower. Handsome plant and free blooming. Each 35c.

**Thuringia.** Extra large flower, fiery red color, good form. Each 35c.

**"Unkle Tom."** The best dark red cactus to date. Large sized flowers, almost black. Was the first to bloom in our field. Admired by all. Each 35c.

Frau Hermine Marx



Cactus Dahlia, Exquisite

**Vesuve.** Rich geranium lake, with deep shading. Each 30c.

**W. Hopkins.** Large size, long twisted petals, good form, color ox blood red, light rose on reverse of petals. Each 25c.

## SALMON SHADES

**Bessie Mitchel.** Apricot orange, shading to a reddish center. Each 15c.

**Countess of Lounsdale.** Color difficult to describe. A blending of salmon-pink and amber. A popular dahlia, blooming freely everywhere. We recommend this very highly. Each 20c, doz \$2.

**Capstan.** Soft salmon, red-tinted apricot at base of petals. A splendid free bloomer. Good companion to the above. Each 30c.

**Cornucopia.** Soft reddish salmon, long petals, profuse bloomer, often three or four flowers in a cluster. Each 25c.

**Clara G. Stredwick.** Shrimp pink, shading to salmon red. Each 20c.

**Exquisite.** Pure orange scarlet with salmon shadings. A fine free blooming cactus, truly exquisite flower of large size. Each 20c.

**General French.** Medium-sized flower of a distinct terra-cotta color. The flowers face out boldly on a bushy plant. Fine for hedging. Each 25c, per doz \$2.50.

**Grenadier.** Medium size, bright reddish old rose, dwarf habit, flowers very erect. Each 35c.

**Lurania.** Orange, terra-cotta, cinnamon. Large flowers of incurved form. Flowers very large, petal very fine. The latest form of cactus bloom. Each 50c.

**Ortwin.** Compact bedding variety, distinct salmon flesh color, with rosy hue. Each 20c.

**Thomas Parkin.** Petals narrow and incurved. A distinctly beautiful mauve orange color. Each 30c.

## PINK SHADES

**Ella Kramer.** Clear, soft pink, shading to white in center, similar to Kremhilde but of lighter shadings. Each 15c.

**Frau Hermine Marx.** Early and one of the freest bloomers in our grounds. Silvery rose pink, shading to almost white in the center. Broad petals. Each 25c.

**Helene.** Dwarf habit, free, flower on stiff stems, creamy white center, passing to mauve rose on outer petals. Each 35c.

**Hazer Kind.** Dwarf habit, mauve pink flowers. Free bloomer. Each 25c.

**Kremhilde.** A popular variety, perfect flowers of brilliant pink shading to white in center. Each 20c.

**Lovely.** Covered with delicate violet-rose flowers with creamy-white shading. Medium size, highly recommended. Each 35c.

**Marjorie Castleton.** A splendid variety, outer petals rose pink, tips and center forets pure white. Handsome plant. Each 40c.

**Thusnelda.** Chamois suffused with rose and pink, a very delicate color. Long incurved petals. Very free. Each 30c.

**Princess Lise.** Medium sized, center delicate rose, suffused carmine, passing to white on the edges. Each 30c.

## WHITE SHADES

**Edelweiss.** Dwarf, 18 inches high. Very free flowering white. Each 15c.

**Flora.** Fine white cactus with large flowers, with broad petals borne on strong stems. Each 30c.

**Fairy.** A beautiful pure white of light, airy form, fine petals. Each 25c.

**Pious X.** Large white, with slight sulphur tint, very double, fine for cutting. Each 25c.

**Spotless Queen.** Broad, pure white petals, flowers of good form. Each 15c, doz. \$1.25.

## STRIPED

**Alfa.** Creamy white, with spots and stripes of reddish purple. Very free blooming. Each 25c.

**Comet.** Delicate lilac penciled, spotted and striped with Tyrian rose. Each 25c.

**Fireworks.** Ground color golden-yellow, striped and spotted with oriental red. Extra fine. Each 50c.

**Meteor.** Delicate flesh, penciled, spotted and striped with Tyrian rose. Each 35c.

## PURPLE SHADES

**Amozone.** Large flowers of glorious, rich, glowing amaranth red, suffused with purple. Extra fine. Each 75c.

**Anna Borneman.** Chamois, passing to lilac rose, broad incurving petals, free and early. Each 35c.

**Floradora.** Free flowering, bright blood-red. Each 20c.

**Libelle.** Good-sized flowers, free, of light rich purple color. Each 30c.

**Mrs. McMillan.** Yellowish-white at base of petals, purplish-mauve, suffused with shades of pink in the body of the flower. We cannot describe the beauty of this grand flower. Always in bloom. Each 50c.

**S. M. Mosaffer Eddin.** A distinct flower of rich purplish-red petals, twisted towards the ends. Very fine. Each 30c.

## UNCERTAIN TYPES

**Mrs. H. J. Jones.** One of the most striking of all the cactus, some flowers scarlet with white tips, some pure scarlet, some almost white with scarlet bands, all on the same bush. Very free blooming perfect flower, admired by all. Be sure to

include it in your order. Each 20c, per doz. \$2.

**Gabriel.** Creamy-white edged with vermillion, sometimes pure vermillion, very double of fine form. Each 25c.

## YELLOW SHADES

**Caradoc.** Clear, bright, pure yellow, long, narrow, incurved petals, forming a fine large flower. Very free bloomer and of fine bushy habit. Each 50c.

**Dutchess of Hamilton.** Light sulphur yellow, suffused rose on outer petals. Large flower, free bloomer. Each 50c.

**Master Carl.** Very large size, petals broad, of bright saffron yellow. Graceful form, one of the best. Each 50c.

**Mme. Camelle Pabst.** Distinct shade of amber yellow, suffused with salmon rose. Good shaped flowers with incurved petals. Extra fine. Each 40c.

**Mrs. George Stevenson.** Bright sparkling yellow, with large perfect flowers on long stems. Each 30c.

**Mrs. Edward Mawley.** Very free bloomer of fine clear yellow flowers of medium size. Each 20c.

**Miss Dorothy Oliver.** Primrose yellow at base, fading to white at the tips of the long narrow petals. Each 25c.

**Sequoia.** A beautiful new dahlia, long, tubular petals, cleft at the tips. Large, perfect, of deep saffron yellow suffused with red. Fine stately habit of growth, fine for hedging. Each 25c, per doz \$2.

**T. G. Baker** Finest yellow exhibition dahlia. Long, narrow petals, form a perfect flower, of large size, often measuring seven inches across. Each 75c.

**Volker.** Free flowering, pure yellow, medium size and early. Each 15c.

## BLENDED COLORS

**Aschenbrodel.** Base of petals gold, passing into rich rose pink, then to pale lemon at the tips. Each 25c.

**Cynthia.** Long, narrow petals, pleasing shade of apricot with white tips and yellow center. Early and fine. Each 25c.

**Country Girl.** Base of petals golden yellow, suffused with salmon rose, which is deepest at the point. A grand blending of rich colors which make it much admired. Very fine and a continuous bloomer. Each 35c.

**Day Dream.** Ground color light amber-yellow, suffused with salmon red. Each 35c.

**Else.** Base of petals delicate buttercup yellow passing to amber, finished with a tip of tyrian rose. Each 25c.

**Effective.** Chamois rose with yellow center. A splendid flower for cutting for which it is indeed effective. Each 20c.

**Forelle.** Medium size of ideal color, lemon yellow, base shading to crimson carmine at tips. Each 50c.

**Faunus.** Early and fine. Color, straw-yellow, shading to rosy scarlet. Long, narrow petals. Each 50c.

**Gold Fausan.** Ground color, chrome yellow, passing to rosy red. Extra fine. Each 25c.

**Mrs. Clinton.** Early. Ground color, deep amber, gradually shading to a rosy scarlet. A very glowing flower. Each 25c.

**Papagai.** Base of petals yellow, then red with yellow tips, broad petals. An odd, yet pretty flower. Each 25c.

**Sceptre.** Base of petals yellow, passing to mauve rose on the tips with a salmon sheen. Each 30.

**Wunderkind.** Canary yellow, shading to white, suffused with flesh at the edges. Each 15c.

## PAEONY DAHLIAS

**Cleopatra.** Rich, oriental red base of petal, primrose yellow, very striking and free. Each 50c.

**Duke Henry.** Brilliant carmine red, extra fine. Each 50c.

**Germania.** Brilliant strawberry red, very artistic. Each 50c.

**King Leopold.** Primrose, shading lighter at the edges. Each 50c.

**Mme. Louise Perier.** Crimson carmine, suffused with white, base of petals yellow, very striking. Each 50c.

**Philadelphia.** Cactus petaled paeony, of giant size. Color, crimson shaded pink, very free flower. One of the best. Each 75c.

**Queen Emma.** Charming shade of holy-hock pink, the inner petals banded with gold. Each 45c.

**Queen Wilhelmina.** Giant fluffy blooms of pure waxy white with yellow centers. Very free. Each 50c.

**La Fusse.** Collette Dahlia. Ox-blood red, color being the same with white marking. Each 20c.

## DECORATIVE DAHLIAS

**Admiral Dewey.** A rich purple with large petals. Very free. Each 15c.

**Blue Oban.** The nearest approach to the blue dahlia. Large flowers of true decorative type. Each 25c.

**Bronze Beauty.** Bright, coppery orange. Very free. Each 20c.

**Black Beauty.** Deep velvety maroon, almost black. Each 15c.

**Cuban Giant.** Giant size. Immense ball of bright maroon. Each 35c.

**Catherine Duer.** Deep, rich glowing red; fine in artificial light. Each 20c.

**Delice.** This grand, new sort has the most delicate coloring imaginable. Soft rose pink with lighter marking. Lasts fine as a cut flower. We recommend this very highly. Each 50c.

**F. I. Bassett.** Carmine purple, shading deeper at the center. Very free, often blooming in clusters. Each 25c.

**Gigantea.** Creamy white of giant size, semi double. Each 25c.

**Gettsburg.** Large, bright, rich, pure scarlet flowers. Each 25c.

**Henry Patrick.** Pure white flowers. Each 15c.

**Jack Rose.** Brilliant, crimson, rich and glowing, similar to popular "Jack" rose. Free bloomer of bushy habit. Each 50c.

**Juno.** Rich velvety reddish brown with brilliant carmine marking. Large, flat flowers on long stems. Admired by all who visit our grounds. Very free blooming plant of stately habit and glossy ivory like leaves. Each 50c.

**Jeanne Charmet.** Giant sized flowers of a pleasing shade of violet rose on a lighter ground color. Six by seven inches across. Each 50c.

**Le Colosse.** Freest bloomer of the giants of a pretty watermelon pink color. Early. A splendid dahlia. Each 30c.

**Mrs. Roosevelt.** Another giant of silvery rose color. Free blooming, of tree like habit. A grand flower. Each 35c.

**Mme. Van den Dacle.** A charming soft rose, shading to creamy white in the center. Fine cut flower. Each 20c.

**Mrs. T. F. DeWitt.** Primrose yellow. Each 15c.

**Mrs. Dyer Pearl or Orange King.** A rich fiery orange scarlet. Very free. Each 20c.

**Maid of Kent.** Deep crimson red with pure white tips, sometimes red and again almost white. Many of our visitors likened it to a speckled chicken. Striking and free. Each 15c; \$1.50 per doz.

**Oban.** Mauve shaded fawn or similar to old rose. An unusual shade, but a fine, free blooming Dahlia. Each 15c; \$1.50 per dz.

**Perle Delyon.** Large pure white petals, fringed at tips. More like a Cactus Dahlia. A magnificent flower. Each 35c.

**Souvenir de Gustave Doazon.** The largest Dahlia to date. Simply a monster of bright scarlet color. Often 8 to 9 inches across. Very double and full. Free blooming. Each 50c.

**Sylvia.** Soft mauve pink passing to white in the center. Each 10c.

**William Agnew.** A rich dazzling carmine, red outer petals, broad, reversing towards the stem. 15c each; \$1.50 dz.

**Wilhelm Miller.** Rich analine red, suffused with purple. Flat flowers. Each 20c.

**Yellow Colosse.** The largest yellow decorative pure primrose, yellow, very double and free. Each 50c.

**Yellow Bird.** The freest blooming Dahlia on our grounds last season, covered with flowers from July to November. Pure primrose yellow, petals slightly notched at the tips. Ranges half way between a decorative and a show Dahlia; fine for hedging. Each 15c; \$1.50 doz.

## SHOW DAHLIAS



Show Dahlia, Grand Duke Alexis

**A. D. Livoni.** Perfect ball shaped flowers of the clearest pink known in Dahlias. Of splendid bushy growth, covered with bloom through the entire season. Fine for hedging. Sure to please those who prefer the show type of Dahlia. Each 15c postpaid; \$1.00 per doz. not prepaid.

**Arabella.** Light sulphur yellow, shaded peach blossom on the edges. Very free and showy; bloom always perfect. Each 20c; \$1.75 doz.

**Client.** A brilliant velvety crimson. Each 20c.

**Colonist.** Coral red, often with two petals in one. Each 15c.

**David Johnson.** Perfect ball shape, splendidly cupped, shrimp pink color. Each 25c.

**Dreers White.** A pure white quilled Dahlia similar in form to Grand Duke Alexis. Each 30c.

**Emily.** White with solferino red tips, large blooms of perfect shape; a very free bloomer. We recommend this highly. Each 35c.

**Ethel Briton.** Creamy white, suffused with solferino red. Each 20c.

**Floranova.** Deep purplish maroon, petals quilled and pointed. Each 20c.

**Grand Duke Alexis.** Immense, ivory white flowers, with faint tinge of pink at the end of each petal. Very popular on account of its delicate form and color. Very free. Each 20c.

**Gracchus.** Orange shaded apricot, fine form. Each 20c.

**Glory de Paris.** The largest of all show Dahlias, splendid form, color deep purple scarlet with velvety reflect. You should get a start of this grand Dahlia as it is more than worth the price. It was a surprise to all who saw it last summer. Will last ten days after cutting. Six to eight inches across. Each \$1.00.

**Hero.** A fine analine red. Each 20c.

**Kaiser Wilhelm.** A grand flower of large size, perfect form; color, deep yellow, shaded and tipped cherry red. Each 35c.

**Miss May Loomis.** White, suffused with soft rose. Each 15c.

**Miss Dodd.** Large, clear canary yellow, slight flush on border. Each 20c.

**Miss Browning.** Pure yellow, tipped snow white, some times solid yellow. Each 25c.

**Pentelope.** White, tipped lavender. Very free, good form. Each 20c.

**Red Hussar.** The best cardinal red, very showy and free. Each 15c.

**Susan.** The most delicate shade of all the Show Dahlia. Color, delicate shell pink, free blooming and showy. Each 50c.

**Thomas White.** Purplish garnet, nearly black, very free and striking. Each 25c.

**Mme. Heine Furtado.** Pure white Show Dahlia, dwarf habit and very free blooming. Each 15c.

## FANCY OR STRIPED DAHLIAS

**Admiral Schley.** Decorative, rich crimson with garnet edges and a broad band of white through the center of each petal. Each 20c.

**Eloise.** Decorative, white, tinted flesh, each petal edged with purplish garnet; some times solid colored. Each 25c.

**Frank Smith.** Show, intense purplish maroon, shading almost to black. Generally each petal tipped with white, some times only in the center of the flower, at others the whole flower is dark maroon. Truly, a wonderful flower and a general favorite in our grounds. Very free. Each 20c.

**Lucy Fanchett.** Show, sulphur yellow, striped and spotted carmine rose. Each 20c.

**Mariner.** Show, lilac, freely splashed with rosy purple. Each 20c.

**Olympia.** Show, bright rosy pink, striped, spotted and penciled with rich crimson. Each 20c.

**Progress.** Decorative, among the best of the striped Dahlias. Soft, rosy lake, beautifully splashed with crimson. Very free bloomer, fine habit. Each 20c; \$2.00 doz.

## DOUBLE POMPON DAHLIAS

**Crimson Beauty.** A brilliant ball of fiery scarlet.

**Gold Hanchen.** Pure primrose yellow.

**Klein Domitea.** Orange buff. Free blooming.

**Little Herman.** Deep red, tipped white.

**May Cliff.** Plum color.

**White Aster.** The best pure white, fringed petals.

**San Toy.** White tipped Tyrian rose.

## Single Dahlias

We have a lot of single dahlias in white, red, and mixed colors. These are very fine for back wall effects as they are very showy. Each 10c postpaid. 90c doz. not prepaid.

## Japanese Quinch

Bright scarlet flowers in great profusion. Early spring appearing before the leaves. A very hardy shrub and should be planted everywhere. Good, strong plants 25c each. Larger size 40c each, postpaid.

## Lilac

Common Purple. Each 25c, postpaid.

## Carnations and Geraniums

Will furnish good, young plants at 10c each, of any variety cataloged, except Novelties. Order early.

## ROSES

We expect next season to be able to supply roses of own growing, but were unable to do so this season, however, we can offer the following varieties that we saw blooming last season and know are true. We will secure any variety listed in any catalog if you will place your order with us early, using our best judgment to secure reliable and true to name plants. We are going to make a specialty in roses, but do not care to stock up on job lots purchased at wholesale as we prefer to grow our own plants and thus be sure they are true.

We offer the following standard roses.

**Red.** Crimson Rambler, Reine, Marie, Henrietti, Ulrich, Bummer, Gen. Jacqueminot, Papa Gontier, Gen. McArthur.

**Dark Red.** Black Prince.

**Cream.** Climbing Kaiserin.

**Pink.** Testout, Maman Cochet, Lafrance, Clio.

**White Shades.** Bride, Killarney, Bessie Brown.

**Apricot Yellow.** Safrano.

Good, strong 2-year bushes at 50c each, postpaid.

## Grape Vines

**Concord.** Purplish black fruit of highest flavor. The standard grape. Strong 1-year vines each 15c. By E. or F. \$1 per dozen. \$5 per 100.

**Niagara.** Light greenish white, fine flavor, heavy yielder. Same price as Concord.

## Strawberries

**Gold Dollar.** Extra early and prolific. 75c per 100 postpaid.

**Magoon.** The standard main crop berry. 75c per 100 postpaid. \$2.50 per 1000 by E. or F.

## Rhubarb

**Victoria.** Large and early. Roots 20c each postpaid. By E. or F. \$1.50 doz.



ASSEMBLY



Quantity	NAMES OF ARTICLES WANTED	Amount	
	Amount Brought Forward		
	Total Amount of Order		

**Special Notice.**—We shall esteem it a great favor if you will give us in the spaces below the names and addresses of some of your neighbors or any acquaintances whom you think would be interested in this catalog. For your kindness we will enclose some seed, which you do not order, **free of charge.**

NAME	POST OFFICE	R. F. D. No.	STATE

DON'T FORGET WE ARE DAHLIA SPECIALISTS







A FIELD OF WINTER LUXURY PUMPKINS GROWING AT GILL BROS. FARM. Courtesy Oregon Agricultural College